

Bartow ELEMENTARY ACADEMY

A Magnet School of Choice



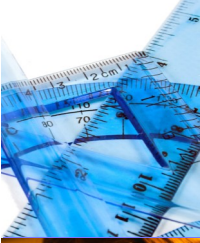
S

SCIENCE



T

TECHNOLOGY



E

ENGINEERING



M

MATHEMATICS

**Science, Technology, Engineering
& Math (STEM) School**

Mission Statement:

Bartow Elementary Academy is a family partnership committed to excellence. We expect everyone to cooperatively acquire the skills and knowledge to become successful life-long learners with respect for themselves, others and the world around them.

Bartow Elementary Academy was established in 1993-94 as a magnet school for the purpose of desegregation of the elementary schools in the greater Bartow area.

Bartow Academy is revising its magnet program to a focus on **STEM** as a result of the district being awarded a Magnet Schools Assistance Program Grant from the Department of Education. Our new focus will include the use of technology integration, inquiry-based lessons, and situational learning provided by phosphate mining companies, local engineers including agricultural engineers, college professors, industrial quality control technologists, business managers and civic groups, to attract diverse students and for all students to exceed proficiency in the core content areas.

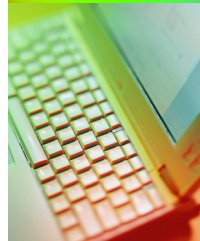
Bartow ELEMENTARY ACADEMY

A Magnet School of Choice



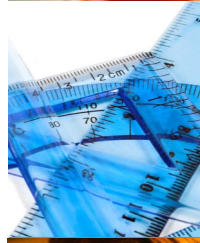
S

SCIENCE



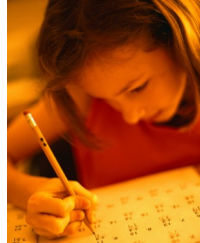
T

TECHNOLOGY



E

ENGINEERING



M

MATHEMATICS

**Science, Technology, Engineering
& Math (STEM) School**

Mission Statement:

Bartow Elementary Academy is a family partnership committed to excellence. We expect everyone to cooperatively acquire the skills and knowledge to become successful life-long learners with respect for

Bartow Elementary Academy was established in 1993-94 as a magnet school for the purpose of desegregation of the elementary schools in the greater Bartow area.

Bartow Academy is revising its magnet program to a focus on **STEM** as a result of the district being awarded a Magnet Schools Assistance Program Grant from the Department of Education. Our new focus will include the use of technology integration, inquiry-based lessons, and situational learning provided by phosphate mining companies, local engineers including agricultural engineers, college professors, industrial quality control technologists, business managers and civic groups, to attract diverse students and for all students to exceed proficiency in the core content areas.

Special Features

- Two Mobile Laptop Carts each with 22 Dell laptops
- Outdoor Nature Classroom and Garden
- Engineering is Elementary supplemental curriculum
- STEM-themed Parent Nights
- Interactive White Boards (SMART), Document Cameras, and ceiling-mounted LCD projectors in every classroom
- Discovery Education Science Virtual Labs
- Video and TV Production Studio

"The principle goal of education should be creating men and women who are capable of doing new things, not simply repeating what other generations have done."

~ Jean Piaget

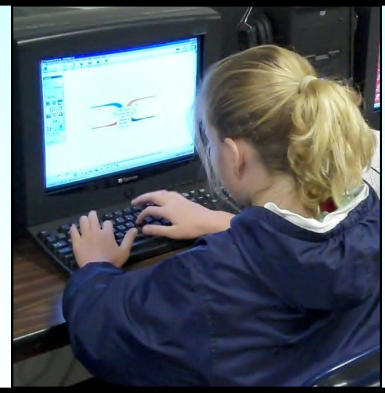


Special Features

- Two Mobile Laptop Carts each with 22 Dell laptops
- Outdoor Nature Classroom and Garden
- Engineering is Elementary supplemental curriculum
- STEM-themed Parent Nights
- Interactive White Boards (SMART), Document Cameras, and ceiling-mounted LCD projectors in every classroom
- Discovery Education Science Virtual Labs
- Video and TV Production Studio

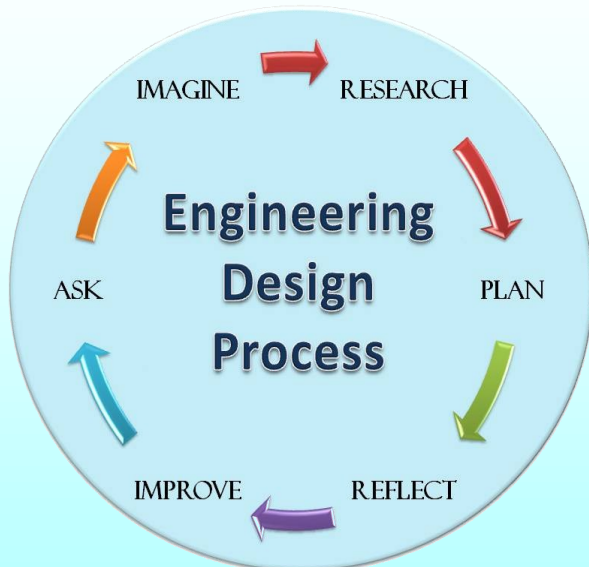
"The principle goal of education should be creating men and women who are capable of doing new things, not simply repeating what other generations have done."

~ Jean Piaget



Coming Soon

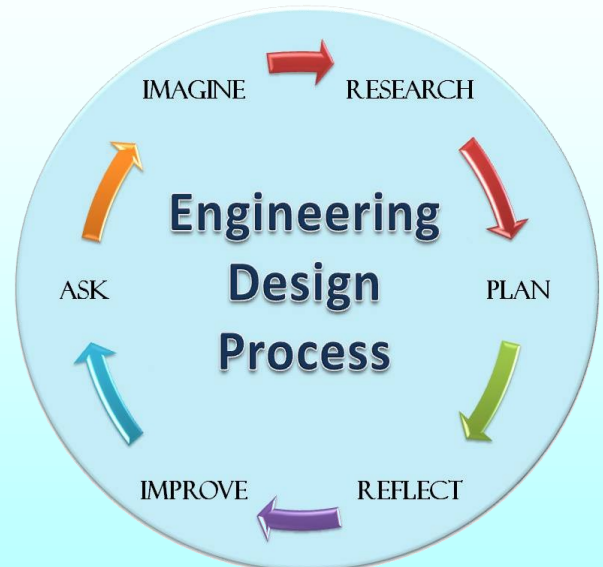
- New STEM/Robotics lab
- Aquaponics and Sustainable Food Garden
- Computer-operated irrigation system
- Additional laptop carts
- Vernier
- Engineering themed curriculum
- AutoCAD drafting software



Bartow Elementary Academy Magnet - Science, Technology, Engineering and Math (STEM) School
590 S. Wilson Ave. • Bartow, FL 33830
863-534-7410 • www.bartowacademy.com
Student day: 8:05 a.m. to 2:40 p.m.
Carol Borders, Principal • carol.borders@polk-fl.net

Coming Soon

- New STEM/Robotics lab
- Aquaponics and Sustainable Food Garden
- Computer-operated irrigation system
- Additional laptop carts
- Vernier
- Engineering themed curriculum
- AutoCAD drafting software



Bartow Elementary Academy Magnet - Science, Technology, Engineering and Math (STEM) School
590 S. Wilson Ave. • Bartow, FL 33830
863-534-7410 • www.bartowacademy.com
Student day: 8:05 a.m. to 2:40 p.m.
Carol Borders, Principal • carol.borders@polk-fl.net